



January 16 , 2025
Librarian's Report
Bradford Public Library

Mission Statement

The Bradford Public Library is committed to supporting and enhancing learning, creativity, and opportunities for personal growth and community connections with reliable information and resources, and the support necessary to navigate those resources in a safe and welcoming environment.

Administrative:

In recent months we, and libraries statewide, have struggled to maintain collections due to processing and delivery delays from vendors. A letter from our sales representative states that orders placed in late October - December are backlogged and not expected to be cleared until the end of January. We can expect business as usual by mid February. In addition to this, ground package deliveries of supplies are often late and even damaged upon delivery. As frustrating as this is for everyone, BPL use and program popularity are thriving 😊.

All said, the new year brings the opportunity to intentionally evaluate, re-think, and plan all that the library is, and continues to be, for the community. Happy 2025!

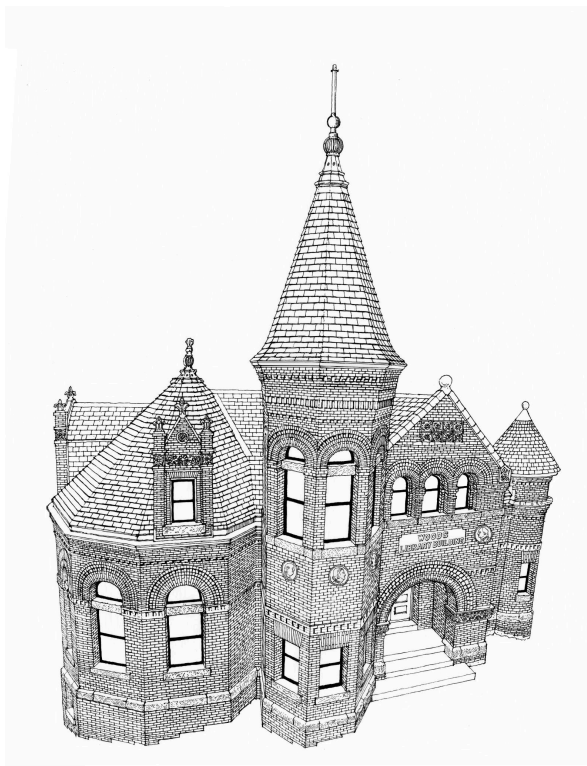
Maintenance:

Book display shelves have been hung in the children's area to promote seasonal themes.

Heat system maintenance replaced two thermostats. Thermostats in the children's room and reading room no longer have the ability to be programmed and must be set manually at the beginning and end of each shift.

Donations:

We received a wonderful donation of illustrations from award winning children's book author/illustrator David Macauley. Mr Macauley loves this building and has given us permission to use these works as we please. In the future, we may expect drawings of the inside of the building, specifically the third floor.



Grants:

- Submitted *2025 Summer Reading grant application* for \$350 offered through the VT State Library.
- Submitted *Roots & Blossoms Fund Application* for \$1,000 to support hiring guest artists to introduce an array of art disciplines to Elementary Art Club members.
- Submitted the WEC Community Fund, asking for \$600 to support Poem Town '25.
- In February, PL will receive a VELI grant of \$1500 for children's programming.

Professional Development:

Some of my favorite PD comes from Pinterest and YouTube for program ideas, tutorials, and more. So many ideas....so little time....

VELI- Monthly virtual meet-up takes place on Friday, Jan 10 at 1pm.

State Webinar PD-Friday, January 10, 10 am: *Using Local Population Data to Learn About the Communities Your Serve*, a UVM and U.S. Census Bureau overview of common data analysis techniques to help us follow the demographic trends in our communities, understand differences across these communities and compare our

communities to the county or state. A live demo applying this to a Vermont region will be shared during the session.

Webinar - Gale 101 – Gale LegalForms, Tuesday, January 14 · 2:00 – 2:30 pm provides national and state-specific attorney forms to help users understand and actively participate in their legal affairs.

Technology:



Do you recognize this symbol? It is time to learn about AI (artificial intelligence). What does it mean and how do we navigate this tool?

Volunteers:

We are grateful for the many volunteers who support our efforts at the library. Thank you Alex Danforth for supporting Story Hour each week, Dottie Unkles for stepping in at the last minute for emergency coverage, Arvid Johnson for recycling, and Larry Coffin for maintaining our very busy Little Libraries, and many more!

Circulation:

| | Jan | Feb | Mar | Apr | May | Jun | Jul | Aug | Sept | Oct | Nov | Dec |
|------------------------|-----|-----|-----|-----|-----|-----|-----|-----|------|-----|-----|-----|
| house circ '24 | 631 | 703 | 732 | 618 | 528 | 694 | 805 | 810 | 585 | 616 | 624 | 549 |
| house circ '23 | 711 | 624 | 780 | 599 | 691 | 817 | 798 | 785 | 556 | 733 | 556 | 638 |
| ILL in '24 | 116 | 92 | 73 | 81 | 106 | 57 | 89 | 45 | 59 | 83 | 61 | 39 |
| ILL in '23 | 68 | 39 | 64 | 64 | 61 | 42 | 49 | 69 | 53 | 50 | 70 | 59 |
| ILL out '24 | 40 | 31 | 32 | 28 | 35 | 23 | 44 | 21 | 26 | 38 | 28 | 26 |
| ILL out '23 | 46 | 28 | 53 | 37 | 43 | 42 | 30 | 33 | 27 | 43 | 31 | 32 |
| audio/ebook '24 | 384 | 402 | 375 | 357 | 342 | 333 | 344 | 318 | 310 | 376 | 350 | 308 |
| audio/ebook '23 | 331 | 388 | 382 | 367 | 381 | 329 | 359 | 400 | 396 | 375 | 412 | 356 |
| Little Libraries Adult | 50 | 37 | 40 | 95 | 53 | 61 | 81 | 76 | 65 | 76 | 79 | 95 |
| Little Libraries Youth | 57 | 61 | 76 | 101 | 103 | 77 | 153 | 99 | 139 | 107 | 118 | 113 |

Visitor Tracking:

| | Jan | Feb | Mar | Apr | May | Jun | Jul | Aug | Sept | Oct | Nov | Dec |
|-------------------------------|-----|-----|-----|-----|------|-----|-----|------|------|-----|-----|-----|
| Visits 2024 | 778 | 868 | 924 | 877 | 1010 | 861 | 925 | 934 | 714 | 813 | 675 | 479 |
| Visits 2023 | 691 | 605 | 821 | 697 | 748 | 927 | 918 | 1151 | 773 | 882 | 556 | 707 |
| New Patron '24 | 5 | 7 | 6 | 8 | 3 | 3 | 14 | 15 | 12 | 13 | 19 | 3 |
| New Patron '23 | 14 | 11 | 3 | 8 | 13 | 15 | 12 | 10 | 7 | 10 | 9 | 8 |
| Program Attendance '24 | 341 | 264 | 240 | 276 | 384 | 301 | 160 | 191 | 244 | 257 | 178 | 139 |
| Program Attendance '23 | 96 | 139 | 158 | 174 | 176 | 227 | 251 | 307 | 159 | 76 | 157 | 220 |

PROGRAMS:

Patron interest, requests, community needs, and collaborative opportunities drive library programming. Library programs are free and open to the public.

BPL Gallery ~We are delighted to showcase mixed media renderings of Bradford Falls by Barre artist Wayne F. Burke.

Grief & Loss Support Group ~ This group meets VNH Spiritual Care Counselor Jill Baron for ten weeks to share authentically and feel deeply heard in a safe space. Experiential exercises include journaling and ritual to help participants expose the layers of grief and move toward acceptance. Pre-registration is required, this second running of the program is again full.

Intro to Tarot ~ On January 30, from 6-8 pm, Abigail Janet will give a brief history of Tarot, and then lead a group reading. The group will then break into pairs to give each other reading.

Vermont Reads ~ BPL requested and received an additional shipment of 25 copies of *Gather*, by Oxbow HS co-principal Ken Cadow, after circulating 100 copies through the community in 2024. Mr Cadow is scheduled to present his book at BPL on March 13 at 6:30 pm. This program is sponsored by the VT Humanities Council.

BPL READS! ~ The Adult Book Club will discuss *The God of the Woods*, by Liz Moore, on February 13 at 6:30 pm. Copies are available at the circulation desk.

Poetry Circle ~ The poetry group meets on the first Wednesday of the month at 3 pm and is open to the public. One member of the BPL Poetry Circle joins the group via ZOOM from outside of the USA!

BPL CREATES ~This month the adult crafting group worked with watercolors. Next up by request: CLAY bowls!



Mahjong ~ This group plays Mahjong each Thursday from 2 - 4 pm. Experienced players help beginners to learn the game.

Spanish Language / Conversation group ~ The Spanish language group meets every Tuesday at 1:30 with at least ten learners in attendance and new members each week.

Tuesday Homeschool Meetup ~ This group is growing and bringing folks from Groton, Corinth, Topsham, and Bradford. A few older homeschooling children from New Hampshire attend the Friday Art Club as well.

Toddler Story Hour ~ Children join Ms. Gail each Friday at 10 am for stories, songs, and crafts. Parents and caregivers appreciate Story Time as an [affordable] opportunity for children and their adults to make new friends, share with others, and practice fine motor skills.

Friday Afternoon Art Club ~ Elementary school aged kids interested in drawing, paint, clay, collage and more join Ms, Gail on Fridays from 3 - 4:30 pm. Weekly projects are on display in the children's room.

Magic the Gathering ~ ages 11+. *On hiatus until the end of ski season!*